



2019 June Celestial Timings

by Cayelin K Castell

Note: I posted our Colorado May the 4th Be With You Wedding Pictures at the end of the June Timings!

The galactic superwave, composed of superhot cosmic-ray particles traveling at close to the speed of light, would appear from Earth as a brilliant blue-white spot of light – about the size of Mars – in (the constellation a.k.a. the Archer) Sagittarius, surrounded by a slightly larger and less bright halo. This source, perhaps as much as a thousand times brighter than any star, would be visible even in daylight.

<http://www.sangraal.com/AMET/index.html>



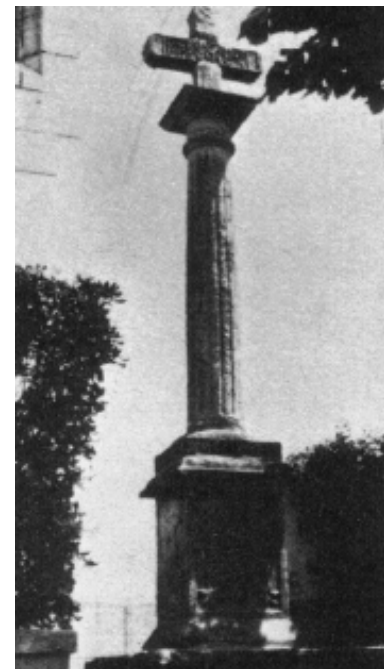
Myths from around the world are encoded with astronomical information about planetary cycles, seeming disasters, and other shifts in the heavens such as Zeus (Jupiter) overthrowing his father (Saturn) describing Jupiter catching up to Saturn every 20 years (happening in 2020), or the story of Sekhmet (the daughter of Ra, the Egyptian Sun God) scorching the Earth with her fury.

Hopi legend speaks of the Blue Star Spirit or [Blue Star](#) Kachina that closely matches the description of the galactic pulse or superwave.

It seems we are going through the End of Time as we know it and entering the Beginning of a New Time in ways we haven't yet imagined. The Earth and our entire solar system is receiving more light codes or photon energy than usual even at a time when there are less Sun spots known as a Solar Minimum but more Solar Wind effects are happening now. More on this here <https://cayelincastell.com/solar-radiation/>

In 1997 Alexey Dimitreiv published information showing all the planets in our solar system are dramatically increasing signs of energetic activity, including atmospheric pressure, brightness from the Aurora Borealis, magnetic field strength and cataclysmic activity. This suggests that our entire solar system is experiencing this increased hyper-dimensional energy. <http://tmgnow.com/repository/global/planetophysical.html>

And additional resource referring to the Galactic Superwave is outlined in detail in the book, *The Mysteries of the Great Cross of Hendaye – Alchemy and the End* by Jay Weidner and Vincent Bridges describing how the Cross of Hendaye is a depiction of the time intervals between galactic super waves or the galactic energy bursts coming from Galactic Center. This black and white photo shows the Cross of Hendaye located in the town square in the Pyrénées-Atlantiques, in southwestern France.



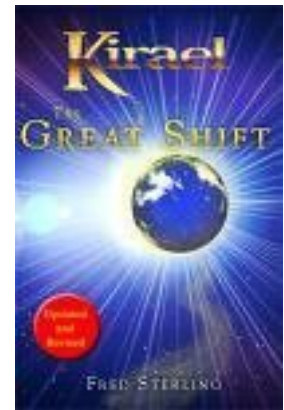
Another perspective about this time comes from *The Great Shift* by Kiraël through Fred Sterling.

Photon energy is the powerful new energy source that will replace electricity in the new millennium. It's a free energy source and nobody can monopolize it. Its outer edge or belt has already reached Earth's atmosphere and is affecting not only Earth but many planets in the solar system.

Photon energy is light energy, and it permeates the Earth in waves. It has the power to extend human life because it realigns the human body into a lightbody. Photon energy vibrates at a very high frequency and confers the power of instant manifestation of thought. Therefore, it is essential to maintain clarity and purity of thought by practicing daily meditation, being in the "now," and staying heart-centered.

In one sense, the Great Shift in Consciousness is the evolution of Mother Earth and her inhabitants into the realm of photon energy for the next 2,000 years.

For a full explanation of photon energy and the evolution of consciousness, see Chapter 4 in Kiraël: The Great Shift Revised Edition. <http://www.kiraël.com/store/product/34-kiraël-the-great-shift-revised-edition.html>



FREE June Solstice Online Event with Shamanic Astrology Mystery School Founders Daniel Giamario and Cayelin Castell Free Registration

<https://shamanicastrology.com/2019-free-online-june-solstice-event>

AND here is more on Celebrating the Solstices

<https://cayelincastell.com/june-solstice-magic/> and
<https://cayelincastell.com/celebrating-the-solstices/>

Meteor Showers

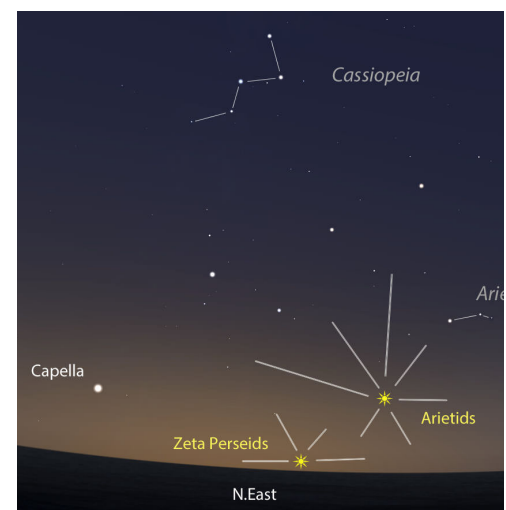
June 7 the Arietids peak: favored with a New Moon though it helps to be near the equator to see them.

June 15 Lyrids peak: though not much has been observed from them in recent years. Look towards bright star Vega in the Summer Triangle and the Pole Star 13,000 years ago. Full Moon tends to dim them.

June 27 Bootids peak: best observing in Northern Hemisphere though not as favorable this year due to Moon light. Look to constellation Bootes where Arcturus is located. This one is known for very slow meteors.

Stars worth noting in the Night Sky this Month

This month the Milky Way is more visible as it shifts or turns up enough to come into view though it is still not the best visibility. Last month the Milky Way was lying flat around the horizon so it was barely visible.



Also prominent this month is the constellation of the Virgin Priestess (a.k.a. Virgo) containing seven main stars. The most visible star in this group is the bright bluish white star Spica, meaning "spike of grain" experiencing a series of Moon occultations this year. Higher in the sky and a bit to the right of Spica is the star Denebola forming the lion's tail in the constellation also known as Leo. If you follow a direct line from Spica to the upper left you will see the bright red star Arcturus.

These three stars Arcturus, Denebola, and Spica form what is sometimes called the Spring Triangle best viewed from April to June. Plus, we have the perfect 30-60-90 degree triangle formed by Arcturus, Spica and Regulus (the heart of the lion). Look East/Southeast to spot both triangles.



Sky Happenings for June 2019

Venus is dropping lower toward the eastern horizon and is now rising less than an hour before the Sun. On June 18 Venus is near Aldebaran about 5° to the lower right of this magical star. Venus shines at magnitude -3.8, however Aldebaran will be much harder to see. Aldebaran is the 14th brightest star in the sky and is around .87 magnitude, 65 light years from Earth.

On June 1 looking toward the ENE before sunrise Venus may be visible with the waning Lunar Crescent Moon at the Root Chakra Gate. The Moon is about 6° to the right of Venus.

Mars remains at a 1.8 magnitude this entire month setting about 2 1/4 hours after the Sun as June begins and 1 1/4 hours by month's end. This means Mars appears a little lower on the horizon as the month progresses while Mercury appears a little higher.

On June 5 a tiny waxing **Crescent Moon** is 6° to the upper left of Mars visible around sunset with Castor and Pollux forming a line about 17° long.

Mercury begins the month of June setting about 65 minutes after the Sun shining at -1.0 magnitude fading to a +0.1 magnitude by June 17 when it is just 1/4 of a degree from Mars.

Mercury and Mars are even closer on June 18th but by the 19th the gap between them has increased to 3/4 of a degree.

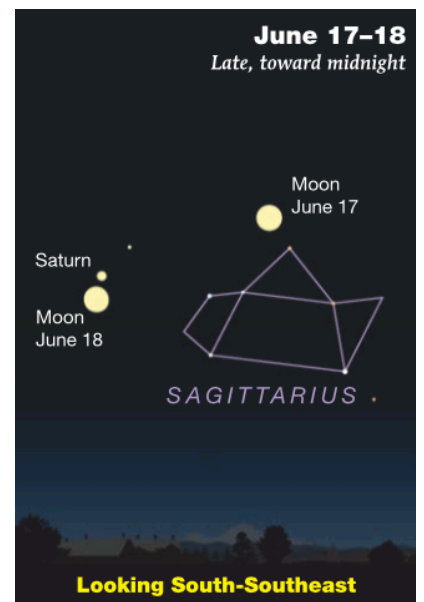
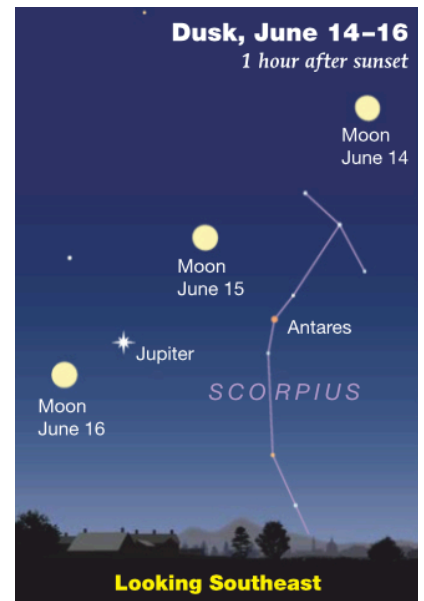
Mercury is it visible about 6° to the lower left of Pollux on June 20 and **Mars** is about the same distance to the lower left on June 22.

Mercury reaches greatest elongation (25°) from the Sun on June 23. If you have binoculars look for Mars near the star Castor at the end of June as they are both nearly horizontal with Mercury.

On June 4 after sunset the Crescent New Moon is setting in the west northwest with Mercury 6° to The right of the Moon.

Retrograde Jupiter reaches opposition to the Sun on June 10 meaning Jupiter is rising as the Sun is setting dominating the entire night with its brilliant -2.6 magnitude. This is brighter and bigger than Jupiter has been in five years. Plus Jupiter is still in the area of the sky where it can be seen about 12° from Antares and by the end of the month will be about 9° from this heart star of the Scorpion.

On June 10 Jupiter is opposite the Sun visible all night long



Retrograde Saturn is rising about 2 1/2 hours after sunset as June begins and is rising earlier in the evening twilight as the month ends. Saturn is brightening from a +0.3° magnitude to a +0.1° magnitude this month. Saturn is visible to the left or upper left of the teapot asterism as described by modern day astronomers in the constellation of the archer. Retrograde Saturn reaches opposition to the sun on July 9.

Jupiter and Saturn are up about 31° apart heading toward their close gathering and exact conjunction in 2020. <https://cayelincastell.com/saturn-in-capricorn-from-2017-to-2020/>

The June Solstice Sun reaches zero cancer at 11:54 AM Eastern time for 8:54 AM Pacific time on June 21.

More on the June Solstice <https://cayelincastell.com/june-solstice-magic/> AND <https://cayelincastell.com/celebrating-the-solstices/>

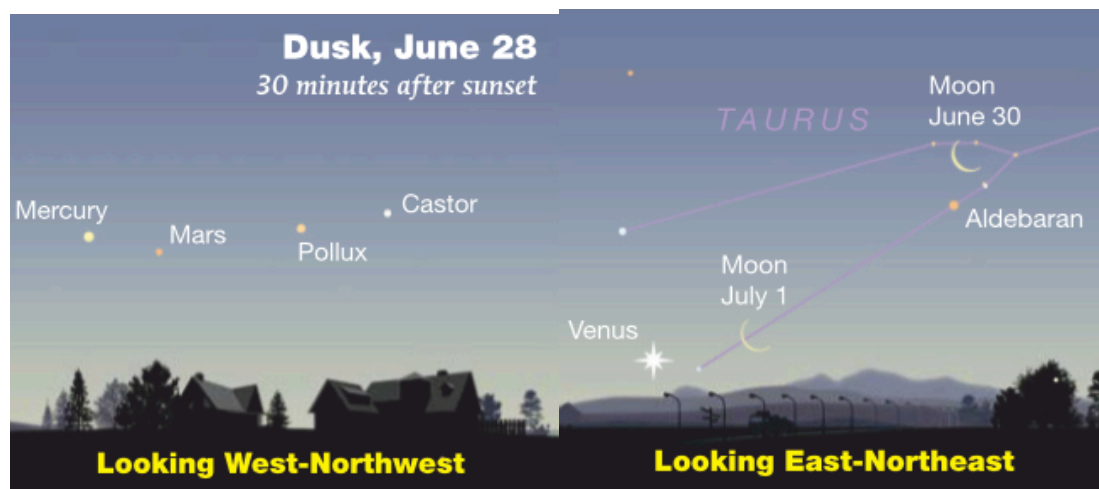
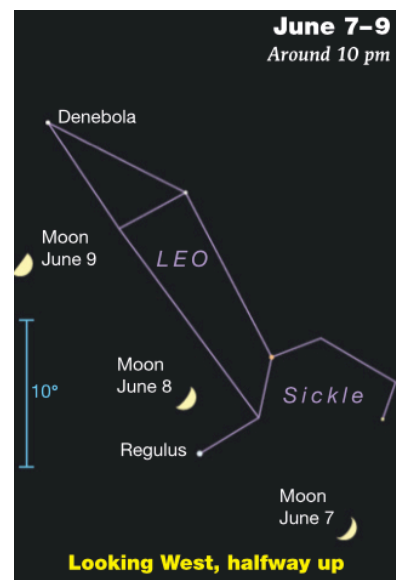
The June Solstice Sun rises at the center of the Sacred Hoop <https://cayelincastell.com/the-sacred-hoop-of-stars/>

Moon with prominent Stars

On June 6 the Moon is near the Beehive Cluster about 4°

On June 8 larger waxing Crescent Moon is above Regulus around 4° <https://cayelincastell.com/planets-with-regulus-heart-star-of-the-lioness/>

A Gibbous Moon forms a fairly large nearly equal lateral triangle with Jupiter and Antares on the evening of June 15.

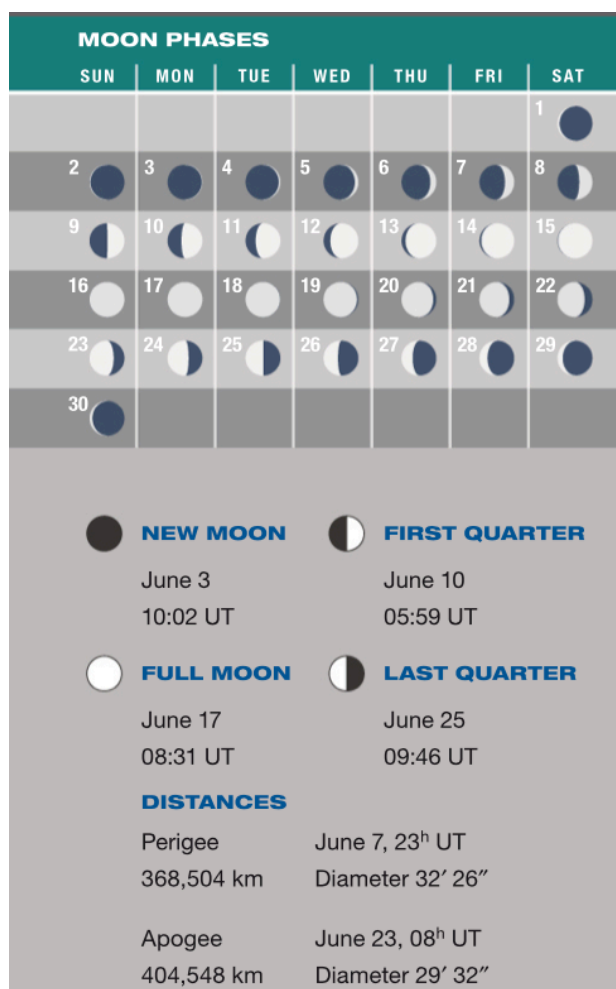


June 2019 Details

Jun 21 2019	Neptune	R	18°Pi43' R
Nov 27 2019	Neptune	D	15°Pi56' D
Jun 04 2019	Mercury	enters	Cancer
Jun 08 2019	Venus	enters	Gemini

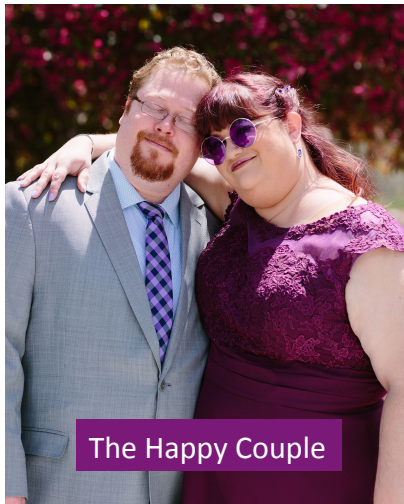
Jun 03 2019	New Moon	12°Ge34'	Aldebaran in the Bull
Jun 17 2019	Full Moon	25°Sg53'	RasAlhague in Ophiuchus and Aculeus in Scorpion

Jun 7 2019	Mercury	04°Cn59' D	Sxt	Uranus	04°Ta59' D
Jun 7 2019	Mercury	05°Cn32' D	Sqr	Chiron	05°Ar32' D
Jun 12 2019	Mars	17°Cn52' D	Cnj	North Node	17°Cn52' R
Jun 13 2019	Venus	05°Ge40' D	Sxt	Chiron	05°Ar40' D
Jun 13 2019	Mars	18°Cn43' D	Tri	Neptune	18°Pi43' D
Jun 14 2019	Mars	18°Cn58' D	Opp	Saturn	18°Cp58' R
Jun 15 2019	Mercury	17°Cn43' D	Cnj	North Node	17°Cn43' R
Jun 16 2019	Mercury	18°Cn43' D	Tri	Neptune	18°Pi43' D
Jun 16 2019	Mercury	18°Cn51' D	Opp	Saturn	18°Cp51' R
Jun 16 2019	Jupiter	18°Sg43' R	Sqr	Neptune	18°Pi43' D
Jun 18 2019	Saturn	18°Cp43' R	Sxt	Neptune	18°Pi43' D
Jun 18 2019	Mercury	21°Cn32' D	Cnj	Mars	21°Cn32' D
Jun 19 2019	Mercury	22°Cn29' D	Opp	Pluto	22°Cp29' R
Jun 19 2019	Mars	22°Cn28' D	Opp	Pluto	22°Cp28' R
Jun 23 2019	Venus	17°Ge51' D	Opp	Jupiter	17°Sg51' R
Jun 24 2019	Venus	18°Ge43' D	Sqr	Neptune	18°Pi43' R



A Fairy Tale/Star Wars Wedding (More of the story on the last page)





The Happy Couple



The Dread Pirate Roberts
And Buttercup
from the Princess Bride



The Caped Crusaders
and Wizardess



Both Families



Peter Officiating



The Parents from both families with the Bride and Groom



Ryan and Nyssa are both brilliant school teachers inspiring their students and each other. They are self proclaimed nerds, loving all things Star Trek, Star Wars, Star Gate, SyFy, games, puzzles etc.

When Peter and I asked them about costumes for the wedding Ryan said we don't have anyone coming from the Princes Bride or Dr. Who. (Nyssa is named after a Dr. Who Character).

Peter instantly knew we could go as the Princess Bride characters the Dread Pirate Roberts and Buttercup. As you can see from the photos we did and it was so fun. Ryan was thrilled saying it would be memorable and he was right!

The weather was perfect, the location gorgeous and everyone seem to have had an amazing time, especially the bride and groom. It was one of the most fun weddings I have ever been a part of and I am so grateful for getting to be witness to and part of the ceremony.

The only one of my children who couldn't be there was Ian who is in China writing, directing, managing and performing in a Theme Park Show. He did Facetime in during the reception. Ian is pictured here when he was in a Pirate Show in the Carribean (Dominican Republic) four or five years ago.

Apparently dressing as pirates runs in the family. 😊

